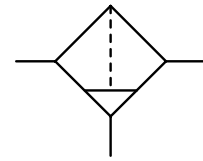


Description	Filter of modular design which can be interlocked with all other instruments of the same series without need for double nipples. The flow on standard filters is from outside to inside; on coalescing filters 0.1 µm from inside to outside.	
Filter element	5 µm, 20 µm, 80 µm made of sintered polyethylene, 160 µm made of stainless steel, 0.01 µm coalescing filter made of borosilicate and activated carbon filter	
Filtration efficiency	coalescing filter: 99.99% at 0.01 µm particle size, residual oil content < 5 mg/m³	
Bowl	plastic version with bayonet catch, type 042 with connection thread	
Drainage	manual drain in conjunction with semiautomatic drain, optionally automatic drain, no drain for water	
Operating pressure	max. 7 bar at series 035, max. 16 bar at series 042, max. 12.5 bar at series 050 to 095	
Temperature range	0 °C to 50 °C / 32 °F to 122 °F	
Material	Body: nylon, POM at types 035 and 042 Bowl: polyamide	Elastomer: NBR/Buna-N Inner valve: brass



**5 to 160 µm, coalescing
activated carbon filter, G $\frac{1}{8}$ - G1**

Dimensions			Bowl	Flow	P ₁	Filter	Connection	Order
A	B	C	Design	Capacity	rate	max.	element	thread
mm	mm	mm		l	m³/h*1	l/min*1	µm	G

Compressed air filter					manual drain with semiautomatic drain, 99.99% at 0.01 µm					F0
38	79	67	plastic	0.008	45	750	7	20	G1/8	F035-01H
			plastic		40	670		5		F035-01G
			for water w/o drain		50	830		80		F035-01J
			coalescing		7	115		0.01		F035-01C
42	146	126	plastic	0.02	75	1250	16	20	G1/4	F042-02H
			plastic		63	1050		5		F042-02G
			for water w/o drain		79	1320		80		F042-02J
			for water w/o drain		87	1450		160		F042-02K
			coalescing		11	180		0.01		F042-02C
			plastic		87	1450		activated carbon		F042-02A
52	174	148	bowl guard	0.04	150	2500	12.5	20	G3/8	F050-03H
					126	2100		5		F050-03G
					16	500		0.01		F050-03C
					150	2500		activated carbon		F050-03A



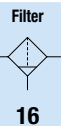
F035



F042

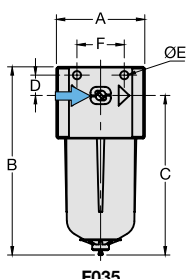
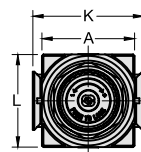


F050

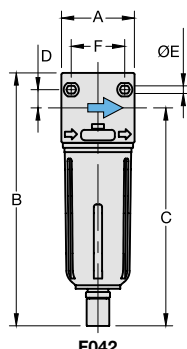


16

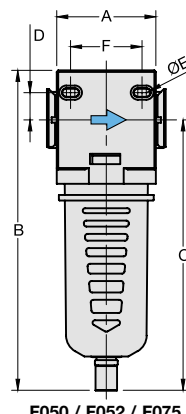
Series	D	ØE	F	K	L
F035	8.5	3.5	20	-	36
F042	10.5	4.5	31	-	42
F050	16.0	5.5	41	63	52



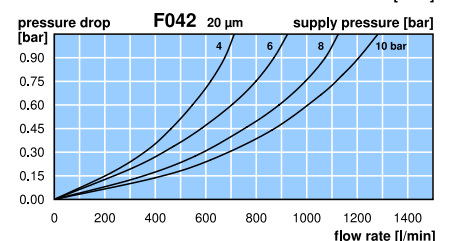
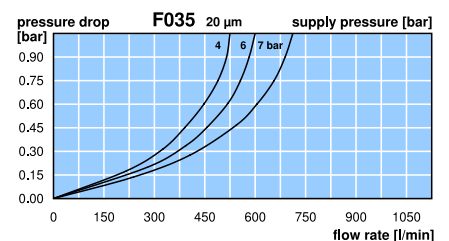
F035



F042



F050 / F052 / F075



*1 at 10 bar operating pressure and 1 bar pressure drop, for F035 and filter element 00.1 µm only 7 bar operating pressure

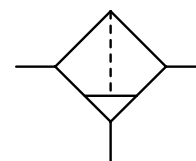
Extensions: see chapter for FRL service units

PDF CAD
www.aircom.net



Order example:
F035-01H

Description	Filter of modular design which can be interlocked with all other instruments of the same series without need for double nipples. The flow on standard filters is from outside to inside; on coalescing filters 0.1 µm from inside to outside.		
Filter element	5 µm, 20 µm, 80 µm made of sintered polyethylene, 160 µm made of stainless steel, 0.01 µm coalescing filter made of borosilicate and activated carbon filter		
Filtration efficiency	coalescing filter: 99.99% at 0.01 µm particle size, residual oil content < 5 mg/m³		
Bowl	plastic version with bayonet catch, type 042 with connection thread		
Drainage	manual drain in conjunction with semiautomatic drain, optionally automatic drain, no drain for water		
Operating pressure	max. 7 bar at series 035, max. 16 bar at series 042, max. 12.5 bar at series 050 to 095		
Temperature range	0 °C to 50 °C / 32 °F to 122 °F		
Material	Body: nylon, POM at types 035 and 042 Bowl: polyamide	Elastomer: NBR/Buna-N Inner valve: brass	



5 to 160 µm, coalescing activated carbon filter, G $\frac{1}{8}$ - G1

Dimensions			Bowl	Flow	P ₁	Filter	Connection	Order
A	B	C	Design	Capacity	rate	max.	element	thread
mm	mm	mm		l	m³/h*1	l/min*1	µm	G

Compressed air filter					manual drain with semiautomatic drain, 99.99% at 0.01 µm					F0
52	174	148	bowl guard	0.04	156	2600	12.5	20	G½	F052-04H
					132	2200		5		F052-04G
					17	500		0.01		F052-04C
					156	2600	activated carbon			F052-04A
63	204	173	bowl guard	0.10	186	3100	12.5	20	G½	F075-04H
					165	2750		5		F075-04G
					18	800		0.01		F075-04C
					186	3100	activated carbon			F075-04A
137	204	173	bowl guard	0.10	192	3200	12.5	20	G¾	F080-06H
					168	2800		5		F080-06G
					18	800		0.01		F080-06C
95	284	237	bowl guard	0.20	828	13800	12.5	20	G1	F095-08H
					750	12500		5		F095-08G



F052



F080



F095

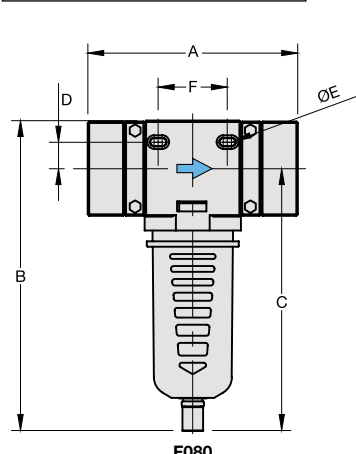
Special options, add the appropriate letter

automatic drain C400200130 for F042 to F095 F0. . -0. . R

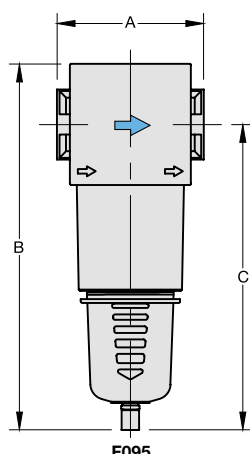
Accessories, enclosed

mounting bracket set made of steel for F095 BW00-02

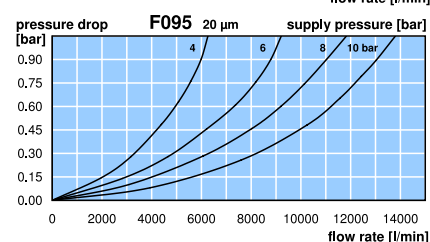
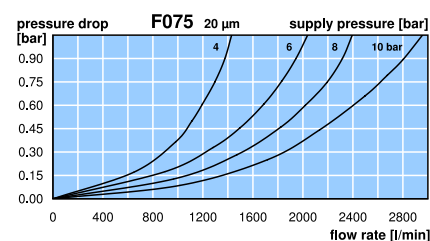
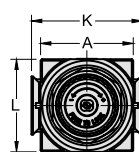
Series	D	Ø E	F	K	L
F052	16.0	5.5	41	63	52
F075	17.5	5.5	45	75	63
F080	17.5	5.5	45	-	63
F095	-	-	-	115	95



F080



F095



*1 at 10 bar operating pressure and 1 bar pressure drop, for F035 and filter element 00.1 µm only 7 bar operating pressure

Extensions: see chapter for FRL service units

PDF CAD
www.aircom.net



Order example:
F052-04H